



CENTURY 21
Thompson Realty
Cayman Islands
Amber Yates
Sales Agent/Consultant

Office: (345) 949-2100
Office Fax: (345) 949-0610
amber@c21cayman.com
<https://century21cayman.com>

CENTURY 21 Thompson Realty Ltd., Grand Pavilion Commercial Centre, 802 West Bay Road, Grand Cayman, Cayman Islands KY1-1201

GRAPETREE BEACH VIEWS ON SMB

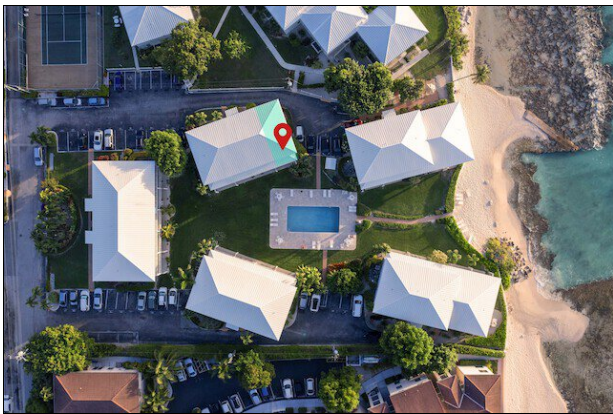
CIREBA# 416907

Seven Mile Beach (Grand Cayman) 📍 Cayman Islands

MLS# 1153662

Condos/Apartments

970,000



CIREBA#: 416907

District/Area: Seven Mile Beach (Grand Cayman)

Region/Country: Cayman Islands

Available: At Closing

Prop.Type: Condos/Apartments

Prop.View: Beach View

Beds: 2

Baths: 2.0

Living Space: 1,228 ft²

Building Type: Attached

Year Built: 1981

Land Zoning: Residential

Class: Residential

Features and Amenities

Appliances

Electric Stove
Refrigerator
Dishwasher
Microwave

Furnished

Partly Furnished

Air Conditioning

Central A/C

Laundry

Washer/Dryer in Unit

Yard / Landscaping

Fenced Yard
Landscaped

Patio - Deck - Porch

Patio

Near By

School(s)

Swimming Pool

On-Site Pool

Gym/Fitness Center

On-Site Tennis

Building - Framing

Concrete Blocks

Water Supply

City Water

Building - Foundation

Slab

Sewage system

Septic tank
Private sewer

Remarks

A superbly positioned condo, with water views from balcony.
End unit townhouse style condo with entry from the second floor, with gorgeous sea views from balcony.
Ample natural light from side windows in living area and bedrooms.
Open plan kitchen, with plenty of scope to modernize or just move straight in and take your time. AC just serviced and freshly painted throughout.
Complex looks fresh and updated, and has its own beach cove and green grass lawn. You are buying into just over 2 acres of freehold, real estate with 200 ft water frontage.
There are no restrictions on rentals. You may Airbnb or long term let. On a comparable unit within Grapetree the average nightly rate minus Tourist Tax and cleaning fee is US\$ 326, rising to US\$ 600 in high season. 2023 gross income for comparable unit was US\$ 108,000.
Located close to World Gym, Body Works, Thai Orchid and the shops and restaurants of Queens Court and & Mile Shops. Make contact for your private viewing TODAY.

Directions

Located on Snooze Lane, close to World Gym on the South end of SMB