



**CENTURY 21.**  
Thompson Realty  
Cayman Islands

**Eloise Jiggins**  
Sales Agent/Consultant

Office: (345) 949-2100  
Office Fax: (345) 949-0610  
eloise@c21cayman.com  
<https://century21cayman.com>

CENTURY 21 Thompson Realty Ltd., Grand Pavilion Commercial Centre, 802 West Bay Road, Grand Cayman, Cayman Islands KY1-1201

## NOBLE PARK TOWNHOME - WEST BAY - ASSIGNMENT WITH 10K WORTH OF UPGRADES

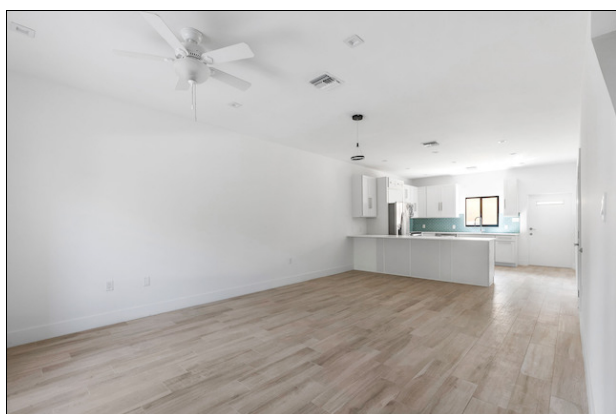
**CIREBA# 417486**

West Bay (Grand Cayman) 📍 Cayman Islands

**MLS# 1154681**

Condos/Apartments

**485,000**



**CIREBA#:** 417486

**District/Area:** West Bay (Grand Cayman)

**Region/Country:** Cayman Islands

**Available:** At Closing

**Prop.Type:** Condos/Apartments

**Prop.View:** Garden View

**Beds:** 2

**Baths:** 2½

**Living Space:** 1,350 ft²

**Listing Class:** New Property

**Year Built:** 2024

**Land Zoning:** Residential - Low Density

**Class:** Residential

### Features and Amenities

#### Appliances

Electric Stove  
Refrigerator  
Dishwasher  
Microwave

#### Air Conditioning

Central A/C

#### Laundry

Washer/Dryer in Unit

#### Patio - Deck - Porch

Patio

#### Television

Cable

#### Building - Framing

Concrete Blocks

#### Water Supply

City Water

#### Building - Foundation

Slab

#### Sewage system

Septic tank

### Remarks

Welcome to your dream townhome in the serene neighbourhood of West Bay. Nestled in a quiet and quaint setting, this brand new construction offers the epitome of modern living with an array of luxurious upgrades.

Step inside to discover a spacious and open floor plan that welcomes you with warmth and elegance. Crafted from sturdy concrete, this townhome boasts durability and longevity, ensuring your peace of mind

for years to come.

Every detail has been meticulously curated, with over \$ 10,000 worth of upgrades enhancing the beauty and functionality of this home.

Indulge in the comfort of two generously sized bedrooms, each complete with its own ensuite bathroom. The contemporary design extends to the kitchen, where modernity meets functionality. Adorned with stainless steel appliances, quartz countertop and hardwood cabinets in a chic shaker style, the kitchen is a chef's delight, offering ample space to unleash your culinary creativity.

Beyond the confines of your abode, the surrounding neighborhood beckons with its charm and convenience. Situated across from a park, you'll relish in the tranquility of your surroundings, while being just moments away from the beach and the vibrant amenities of West Bay.

With its prime location, you'll find yourself effortlessly avoiding the hustle and bustle of traffic, allowing for seamless commutes and easy access to everything you desire.

**Directions**

From Hell Road turn right onto Fountain Road, then right onto Velma Banks Drive. Property is 6th on the left.